

## QUALITY is the key

### Files to supply...

Software used by GEMPLUS Printing Team:  
QUARKXPRESS™, ILLUSTRATOR™, PHOTOSHOP™  
FREEHAND™ on MACINTOSH Computer

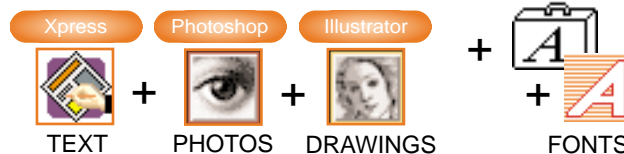
#### Option 1

#### DTP FILE

THIS SOLUTION IS RECOMMENDED FOR FLEXIBILITY AND PERFORMANCE. A SINGLE DTP FILE CAN BE USED FOR PRINTING ON PAPER, MOLDED ABS CARDS OR LAMINATED PVC CARDS INDIFFERENTLY.

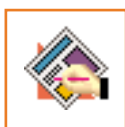
Once you have finished your DTP design on a Macintosh, send in your digital data. Gemplus then takes care of producing the films and color proofs according to the specific requirements of the Dry or Wet Offset process. GEMPLUS' Studio can supply you with a blank Quark Xpress template to create your graphical design.

Each software package is dedicated to a specific function:



### DTP SOFTWARE AND CONFIGURATION

## YOUR FINAL DOCUMENT IS TO BE PRESENTED UNDER QUARK XPRESS



THIS SOFTWARE ALLOWS YOU TO ASSEMBLE ALL ELEMENTS IN YOUR FINAL LAYOUT:  
"IMAGES" (IMPORTED FROM PHOTOSHOP) "+ TEXT" (ENTERED DIRECTLY UNDER QUARK XPRESS OR VECTORIZED IN ILLUSTRATOR) "+ DRAWINGS" (CREATED IN AND IMPORTED FROM ILLUSTRATOR)

#### Your CHECKLIST

- Include all elements forming your graphical design (including necessary screen and printer fonts).
- Photos and drawings recorded in EPS format and entirely imported into your XPRESS template.
- Each photo/drawing (imported at 1:1 scale) must be updated under XPRESS before the final file is saved.
- The insert arrow drawn in XPRESS must be at least 1.5 mm from the module.
- Benday : screen overlap limited to two colors, for more colors use Pantone reference.  
ex.: ■ Magenta 100 % + ■ Yellow 90 % = ■ or ■ Pantone 485  
■ Cyan 75 % + ■ Magenta 65 % + ■ Yellow 95 % = ■ > use ■ Pantone 450
- Caution: maximum 5 colors on an ABS card (4 colors + Pantone or Cyan/Magenta/Black + 2 Pantones...).
- Position of the module (front and back): to produce your final document, you can use the template to visualize both sides of the card and verify the position of the module > see *Diagram. 1*,

Include a color print-out with both sides of the card with your DTP file. This print-out will serve as the reference for the production of the model, films and for the final color proof.

THIS SOFTWARE ALLOWS YOU TO HANDLE YOUR PHOTOGRAPHS  
RETOUCHING, IMPLEMENTATION OF LAYERS, TRACES  
>NEVER INSERT TEXTS INTO YOUR PHOTOS

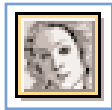


## Your CHECKLIST

- Resolution of the scanned photo: 300 dpi  
Resolution of a scanned linework image: 1200 dpi
- Maximum total screen percentage 300 % for ABS and 250% for PVC
- Image recorded in CMYK EPS format at 1:1 scale in relation to the card graphics without DCS (Desktop Color Separation)
- If text or graphical elements are to be integrated into the image, build the document using layers, separating each element from the background image. Save this document in PHOTOSHOP format without merging your layers. For Conventional texts, It is strongly advised to assemble the different elements directly in Quark XPRESS. If they are in the Picture: these texts will have the picture resolution which is not enough for text.
- Avoid using a too strong "UCR" (under color removal)

## GRAPHIC ELEMENTS, LINE DRAWINGS CREATED WITH ILLUSTRATOR / FREEHAND

SOFTWARE PACKAGE ALLOWS YOU TO CREATE YOUR DRAWINGS / GRAPHICS AND ALLOWING YOU TO VECTORIZE TEXTS.



### Your CHECK LIST

File saved in EPS format and All texts are vectorized before your final document is saved.

- Benday for text: screen overlap limited to two colors, for more colors use Pantone reference.
- Include a list of Pantone references with your color printout (5 colors maximum).**
- If a picture (pixel), a file is to be imported and embedded within Illustrator, Please, also supply this picture in its native program - This allows us to edit if necessary. The BEST would be to keep the picture as a link
- A scanned graphical element imported into ILLUSTRATOR takes the form of 4-colors process. Create graphical elements directly under ILLUSTRATOR. For optimal quality, use the vectorial mode and the desired Pantone colors.
- Include a color print-out with both sides of the card with your DTP file.



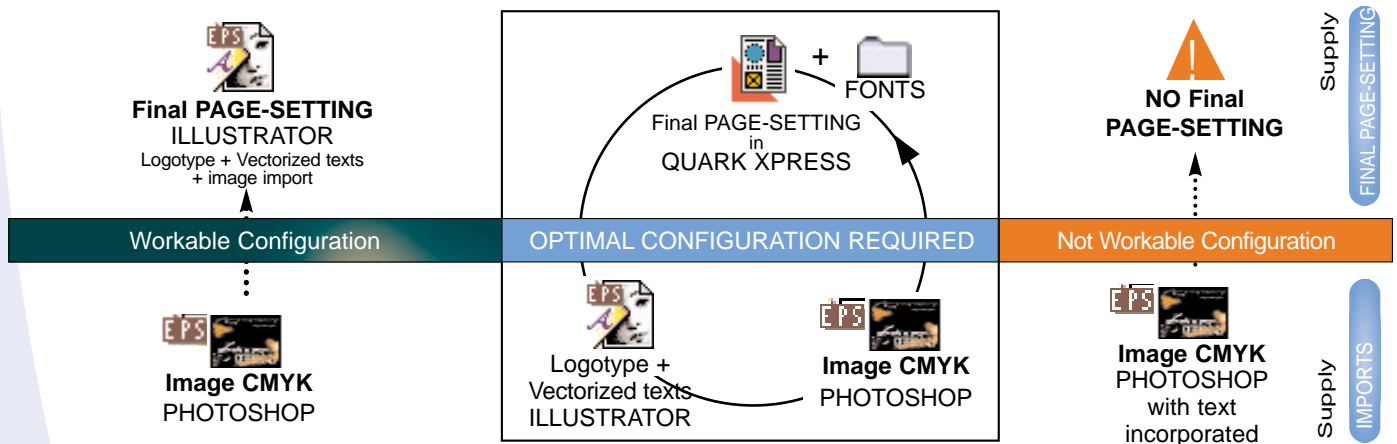
## FONTS (Screen Font + Printer Font)



FONTS

TEXTS composed in XPRESS or ILLUSTRATOR: You must furnish each character suitcase for any data captures to allow reading, imagesetting or any recomposition.

TEXTS composed and vectorized in ILLUSTRATOR: no font suitcase needed and no data capture possible. Vectorized text is recommended for any composition using non-Latin alphabet



## WORKING WITH A "PC"

**A document saved on a PC can be prepared using the Same Following softwares:**  
Quark XPRESS / ILLUSTRATOR / PHOTOSHOP / FREE HAND

- Because some conflicts between Macintosh fonts and PC fonts: It is mandatory to Vectorize all the text
- Recommended File Format: EPS / TIFF



GEMPLUS